

COMMITTEE FOR SPATIAL INFORMATION

Established in terms of section 5 of the SDI Act, 2003



Introduction To Collaborative Data Custodianship In SASDI

Joint ICA Commission Workshop
14 September 2018
University of Pretoria

Presented by Nicolene Fourie
Principal Researcher: Geo-Informatics
CSIR, Merake Institute
Email: nfourie@csir.co.za

OVERVIEW

- Legal context
- SASDI Custodianship Framework
- Implementation
- Case application

LEGAL CONTEXT

Department of Rural
Development and
Land Reform

Office of the Chief
Surveyor General

NSIF



Spatial Data Infrastructure Act
(SDI Act No. 54 of 2003)

Objectives of the Act

To Establish:

- The **South African Spatial Data Infrastructure (SASDI)**;
- The **Committee for Spatial Information (CSI)**;
and
- Electronic Metadata Catalogue (**EMC**)

To Provide for:

- Determination of **Standards and prescriptions** to facilitate **sharing of spatial information**
- The capture and publishing of **metadata**
- To **avoid duplication of data capture**
- Matters concerned with **appointment and responsibilities of data custodians.**

LEGAL CONTEXT: CUSTODIANSHIP



Reference to SDI Act Section 5(2)(j), 6(2)(a), 11(3), 12, 14, 15(1), and 16

Base Data Set Custodianship Policy

Section 6.1.5 Base data set governance

Section 6.1.4 ***Shared base data set custodianship***

Section 7. Roles and responsibilities.

- 7.6 The CSI must promote coordination and cooperation between base data set custodians and other organs of state.
- 7.7 The Data Subcommittee must recommend the list of base data set custodians to the CSI for approval.
- 7.8 The Department will be responsible for providing implementation support to base data set custodians and other organs of state.

Section 8. Monitoring and evaluation

- 8.4 The Data Subcommittee will from time to time evaluate the list of base data set custodians and base data sets in relation to the user requirements and the data product specifications.
- 8.5 The CSI will monitor data custodians' compliance with all standards and legal requirements.

Draft compliance guidelines to SDI Act



Spatial Data Infrastructure Act
(SDI Act No. 54 of 2003)

LEGAL CONTEXT: CUSTODIANSHIP



Spatial Data Infrastructure Act
(SDI Act No. 54 of 2003)

Base Data Set Custodianship Policy

6.1.4 Shared base data set custodianship

Where relevant, it is possible to have ***more than one organisation as base data set custodian for the same spatial object or feature***. This is called shared base data set custodianship. In such circumstances one organisation, called the ***base spatial data custodian***, is the custodian for the spatial attributes (geometry), and another organisation, called the ***base attribute data custodian***, the custodian for the descriptive attributes. Both data custodians will agree to and adhere to policies, standards and specifications for the base data set.

IMPLEMENTATION CONTEXT

- SASDI contains SDI activities within the terrestrial, coastal and marine domains,
- Base data set custodians - organs of state,
- Custodial responsibilities over all spheres of government,

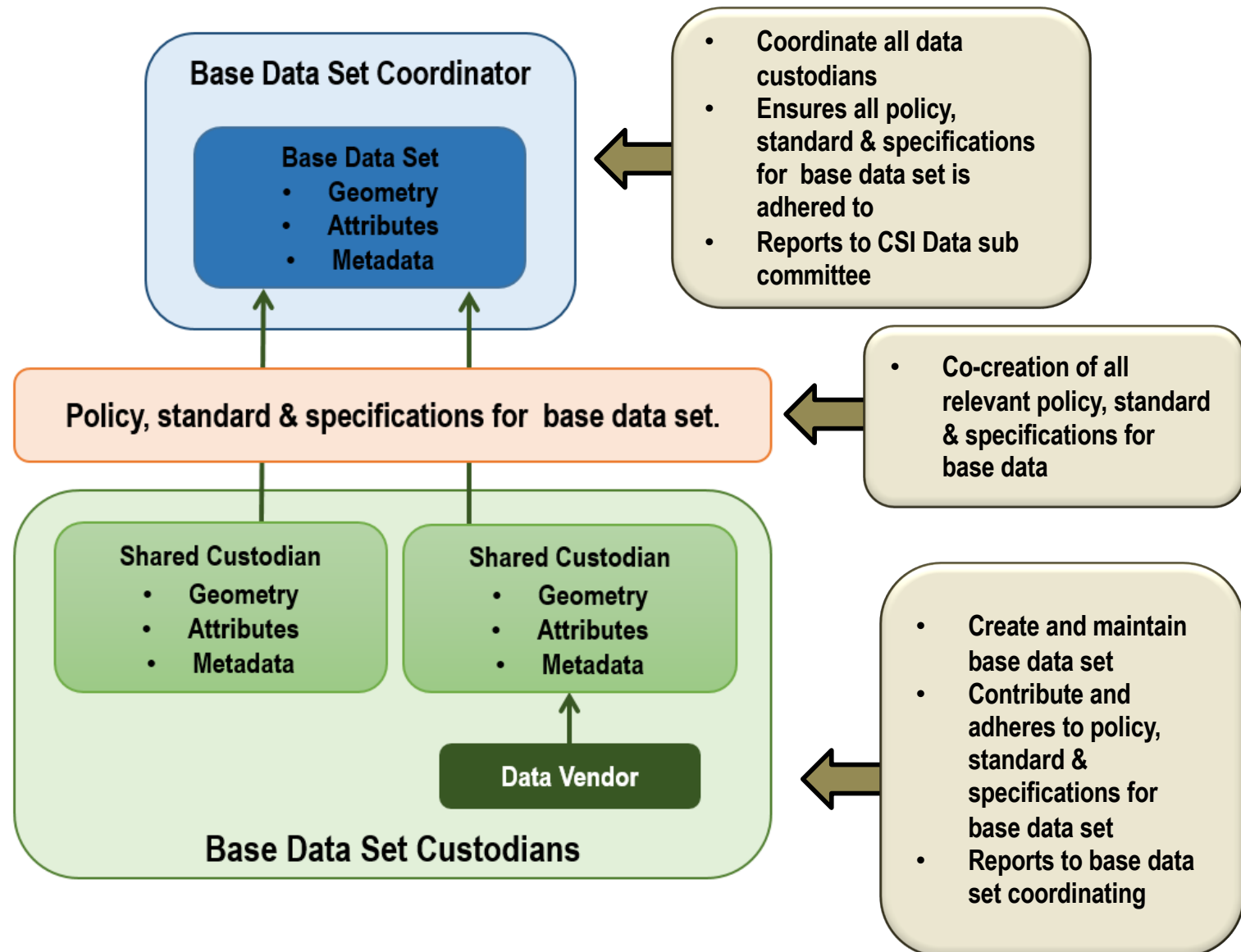


CUSTODIAN REFERENCE MODEL

Base Data Set Governance

Base Data Set Governance Framework

Base Data Set Creation



IMPLEMENTATION: PROGRESS REPORT

Criteria

- Develop and approve criteria for Base Data Sets
- Develop and approve criteria for Custodians
- Develop and approve custodianship reference model

Base Data Set Themes

- Identify and approve 10 priority base data set themes.

Custodian reference model

- Develop process and procedures to support the custodian reference model,
- Facilitate a inception meeting with relevant stakeholders (potential custodians) for base data themes,
- Identify potential data sets associated with data theme,
- Obtain nomination from representatives for a coordinator of the base data set them,
- Obtain CSI approval,
- Appointment letter to accounting officer,
- Implementation of custodianship reference model.

IMPLEMENTATION: PROGRESS REPORT



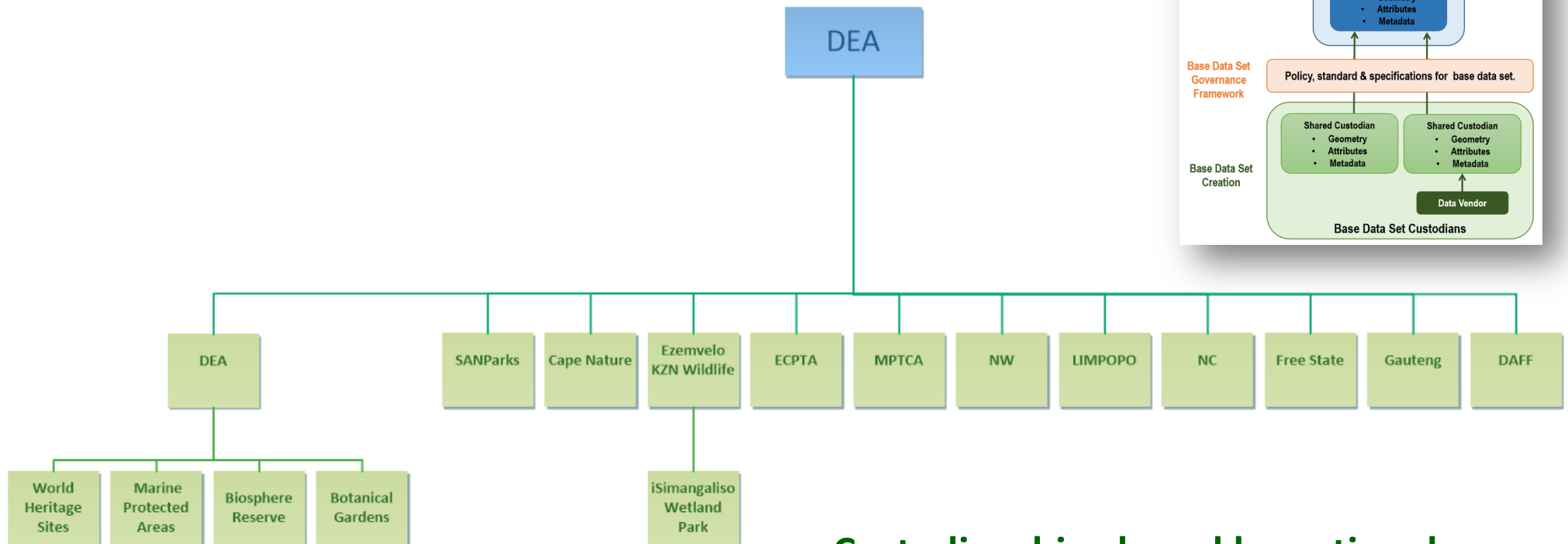
Base Data Set Theme	Custodianship Workshop	Coordinator	Base Data Sets	Custodians
Administrative Boundaries 1	2018/05/28	DRDLR: Office of Chief Surveyor General Identified and appointed by CSI	In the process of identifying and defining the data sets	In the process of identifying custodians
Administrative Boundaries 2	2018/02/15	Municipal Demarcation Board Identified and appointed by CSI	In the process of identifying and defining the data sets	In the process of identifying custodians
Imagery: Aerial Photography	2017/08/16	DRDLR: NGI Identified and appointed by CSI	Aerial photography (0.25m - 0.5m)	Identified and approved by CSI
Imagery: Satellite Imagery	2017/08/16	SANSA Identified and appointed by CSI	Satellite Imagery	Identified and approved by CSI
Transport	2018/06/05	National Department of Transport Identified and appointed by CSI	In the process of identifying and defining the data sets	In the process of identifying custodians

IMPLEMENTATION: PROGRESS REPORT



Base Data Set Theme	Custodianship Workshop	Coordinator	Base Data Sets	Custodians
Land Cover	2017/03/15 - 16	DRDLR: NGI Identified and appointed by CSI	Identified and standard created to define data set content	In the process of identifying custodians
Cadastre	2018/05/29	DRDLR: Office of Chief Surveyor General Identified and appointed by CSI	In the process of defining the data sets	Identified not yet appointed
Hydrology	2017/08/16	DWS Identified and appointed by CSI	In the process of identifying and defining the data sets	In the process of identifying custodians
Geodesy	2017/08/16	DRDLR: NGI Identified and appointed by CSI	Identified	Identified not yet appointed
Conservation Areas	2017/03/15 - 16	DEA Identified and appointed by CSI	Identified	Identified not yet appointed
Land Use	2017/03/15 - 16	Identified but will be reviewed	-	-
Social Statistics	Reassess the theme content and governance.			

CASE STUDY: CONSERVATION AREAS



Custodianship shared by national, provincial entities and statutory bodies.

CASE STUDY: CONSERVATION AREAS

DEA

Input data

Collect

Process

Analyse

Dissemination

Archiving

Evaluation

PACA Update and Maintenance

SAPAD

GITO
Policy

MAPA Tool

MAPA Data

EGIM
System

Data Package

PAR

UNEP

Viewing Platforms

DEA

SANParks

Cape Nature

Ezemvelo
KZN Wildlife

ECPTA

MPTCA

NW

LIMPOPO

NC

Free State

Gauteng

DAFF

World
Heritage
Sites

Marine
Protected
Areas

Biosphere
Reserve

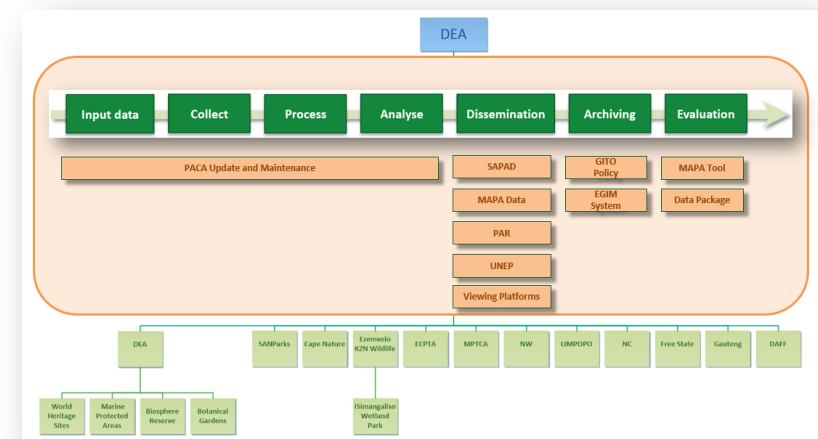
Botanical
Gardens

iSimangaliso
Wetland
Park

CASE STUDY: CONSERVATION AREAS

Lessons learnt

- Operational requirements linked to the governance of a base data set,
- Standardisation of processes by all contributors, geographically or organisationally dispersed,
- Different political agendas and budget priorities,
- Internal and external stakeholders is vital - economic point of view,
- Ensure sustainable budget allocation,
- Uptake of the base data set will increase only if there is wide and transparent stakeholder engagements,
- Authoritative data set. *“One version of the truth ...that is all we want!”*



CASE STUDY: CONSERVATION AREAS

Lessons learnt

- Formalise engagements – Protected Areas Technical Task Team report to DEA National Working Groups,
- Proven case in South Africa for shared custodianship.



Protected Areas Technical Task Team (PATTT) meeting



THANK YOU